



Sound Insulation Prediction Software

Updating the USB Key from version 6.2 or earlier

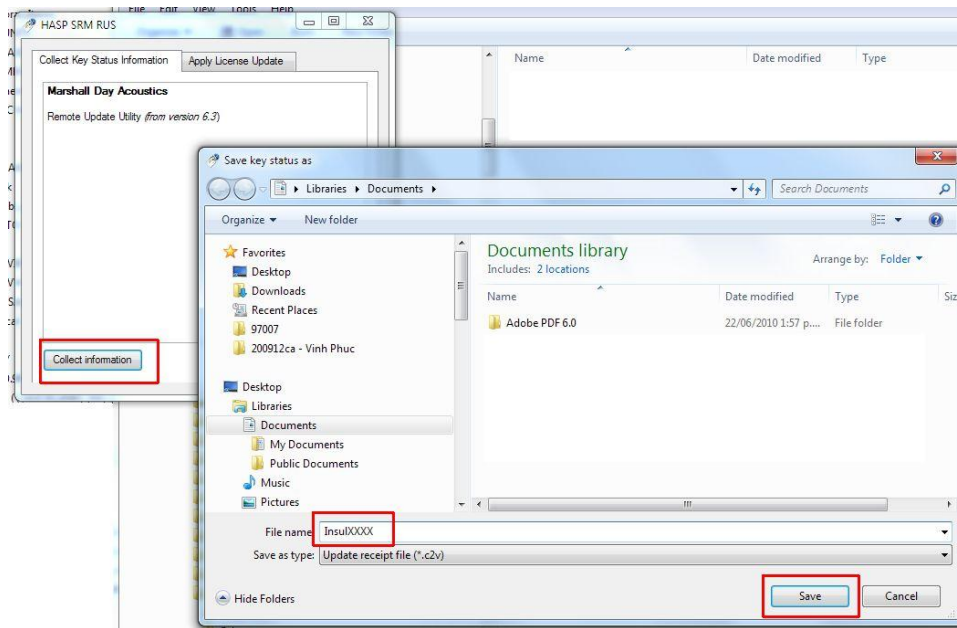
Versions 5.6 to 6.1 of INSUL used the older Hasp 4 key (see picture below). These keys can not be updated and a new Hasp HL key is included in the upgrade price and will be supplied to you by your Distributor. If you are upgrading INSUL from version 6.2 then you will already have a new Hasp HL key and this can be easily updated.



Download the remote update utility from the Insul website

<http://www.insul.co.nz/download/MDARemoteUpDateUtilityV6-3.zip>

Unzip and run the file. You should see a screen display as below:



Save the key information to a file by clicking on the button labelled “Collect Information” and email this c2v file to your distributor. The distributor will email back a v2c file to update your key to 6.4.

Use the remote update utility again and this time use the “Apply Licence Update” tab and click the “Apply Update” button to read in the v2c file that was sent to you. Your key should now be updated and you can start INSUL.

